

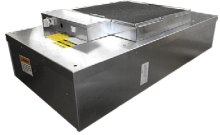
MAC 10® LEDC

2x4, 2x3.5, 2x3, 2x2



The MAC 10 LEDC features the most control options and the most versatile control system available on the market today, while topping the industry in energy efficiency.

MAC 10® LEAC



The LEAC is the first (FFU) with low watts, low profile, and high air flow. Three speed switch features low, medium, and high settings. Backward-inclined centrifugal fan. High efficiency particulate air (HEPA) UL 900 Filter: 99.99% efficient @ 0.3 micron.

MAC 10® LEAC2

2x4, 2x3.5, 2x3, 2x2



The LEAC2 is the first (FFU) with low watts, low profile, and high airflow. The MAC 10® LEAC2 2x4 ft (600x1210 mm) provides one of the lowest power consumption levels of any FFU in the industry. Running at only 193 watts @ 90 fpm, the unit uses less energy than traditional FFUs and reduces operating costs.

MAC 10® RFAC

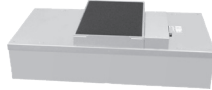
2x4, 2x2



Developed for applications requiring negative pressure reverse flow FFUs. The RFAC is designed to pull contaminated air from the intake side of the filter, filter the air, and then exhaust it outside of the area required.

MAC 10® Original

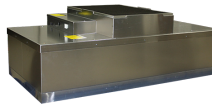
2x4, 2x3.5, 2x3, 2x2



The MAC 10 Original comes standard with the filter integral with the unit housing, requiring the unit to be removed from the ceiling grid to replace the filter. The RSR unit has the filter sealed to the unit using the knife edge/gel seal construction, allowing the filter to be replaced from the roomside.

MAC 10® IQ

2x4, 2x3.5, 2x3, 2x2



The MAC 10 IQ is the world's first smart fan filter unit. With its micro-computercontrolled EC motor, the MAC 10® IQ dynamically adjusts itself to maintain the set airflow, compensating for changes in static pressure, filter loading or other local conditions.

Cleanroom Controls and Monitoring



Next-Gen cleanroom monitoring and control system products that have the ability to automatically monitor and report errors found on any fan filter unit. System level sensors can be monitored.

IsoClean® HEPA Air Cleaners



A complete lineup of portable HEPA filtration with optional UV-C lighting. CFM of 400, 800 and 1700 on the CM model. Easy to move and maintain, the IsoClean lineup provides HEPA filtration and a high number of air changes per hour to any environment.

Stainless Steel Grilles



The 3/4" single deflection supply grille provides effective directional control of the air stream in one or two directions. The bars are pivoted at the face, giving a uniform, aligned appearance regardless of blade angle setting.

Ducted Ceiling Module (DCM)



The E Ducted Ceiling Module is ideal for applications where minimal installation space is available and ultra clean air is a requirement. The DCM high efficiency ceiling module consisting of anodized aluminum frame, a galvanized back plate, 41-mm filter pack, polyurethane encapsulating sealant and dual access ports.

Ducted Ceiling Module (RSR)



The DCM-RSR offers leak-free performance in a compact room-side-replaceable module. Designed to be installed in either 1 1/2" or 2" TBar ceiling systems or gypsum/plaster wall board systems, initial installations and filter maintenance are simplified.

About Us

ENVIRCO specializes in the manufacture of cleanroom filtration systems for markets that require ultraclean environments for critical technologies. With our selection of innovative products, superior service, and years of proven experience, ENVIRCO holds the total clean air solution for your application.

Contact Information

National Sales Manager

Adam O'Quinn adam.m.oquinn@envirco.com
919-499-8856