

TECHNICAL NOTE

■ Control Questions

When considering controls for your cleanroom, you should consider what options you might want. ENVIRCO offers two styles of controls based upon an open Modbus RTU protocol. Options include:

- » Plug and Play using an encoder-based control console called the ACC series
- » Touchscreen
- » Monochrome graphic display
- » Facility-specific
- » Field configurable
- » Animated PLC based
- » Animated PLC with pass through to PC
- » Building Management Control

■ Control System Selection

By addressing the following questions, we can help select the optimum control system for your application.

Number of Units _____

Number of Rooms _____

ECM (DC) Fans _____

AC (PSC) Fans _____

■ What do you want to be able to control or monitor?

Control:

- _____ ON/OFF
- _____ Globally adjust all fans
- _____ Individually control each fan
- _____ Energy saving setback of each fan
- _____ RPM motor feedback for motor failure (DC motors)
- _____ RPM Motor feedback for filter loading (DC motors)
- _____ Alarm

Communications:

Interface with BMS-Building Management System

- _____ Modbus RTU
- _____ Modbus TCP
- _____ BacNet IP
- _____ BacNet MSTP
- _____ Ethernet
- _____ Text message
- _____ Email notification
- _____ Analog 0 to 10 volts
- _____ Alarm signal only
- _____ Communicate directly from fans to BMS (only)?
- _____ Communicate with Console and then pass through to BMS?
- _____ Pass all data through to BMS or just an alarm?
- _____ Interface to a PC?
- _____ Interface with the Internet for remote viewing?
- _____ Interface via OPC server?

External I/O Interface Required.

- _____ Occupancy Sensors
- _____ Room Particle Counter Interface
- _____ Room Pressure Monitoring
- _____ Temperature
- _____ Humidity
- _____ Lights

TECHNICAL NOTES

■ What do you want to be able to control or monitor? (con't)

View:

___ Encoder based console and review each fan individually (lowest cost)



ACC1-125



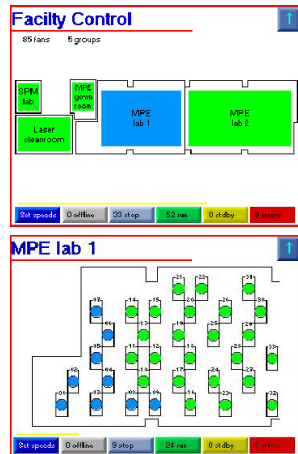
ACC1001 (Field Configurable)

You would like to have:

- ___ Complete facility view of all rooms
- ___ View of each room or group
- ___ Individual fan view



ACC7052



ACC7015 (Field Configurable)

