

Save Time • Save Money • Improve Performance

Introduction

ENVIRCO®'s Panel Mount Console is a single zone FFU control console that can mount in a panel cut-out or in a single-gang box. Designed for individual units (flow hoods), small cleanrooms, and mini environments, the ACC1001 can provide FFU control and monitoring with alarm notification. The unit can provide individual or global commands. It can accommodate EC (RPM feedback) FFU units or AC (pressure switch) monitoring, along with analog sensor for differential pressure transducer and/or airflow sensor monitoring.



Main Functions

- » Polls and displays setpoint/status (RPM)
- » Alarm for errors (RPM, communication, sensor limits)
 - » Relay output trips on alarm set
 - » Audible alarm notification
- » Display shows setting/RPM/sensor valve

Features

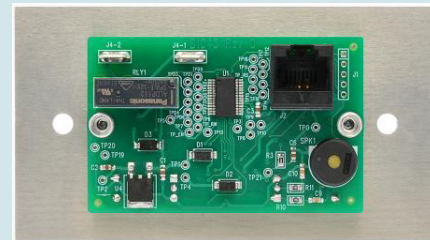
- » Control and monitor up to 25 FFUs
- » Individual and global commands
- » RPM/tachometer feedback
- » Audible alarm onboard
- » Open/closed contact switch feedback
- » Analog sensor monitor and alarm
- » Access code protected
- » Field configurable (number off FFUs, sensor type alarm limit)
- » Panel/wall mount (remote power)

Options

- » ACC1001 - Panel mount console (open frame) only
- » ACS2310 - Wall mount enclosure
- » ACS2311 - Power/communication adapter
- » ACS2308/ACS2303 - AC/DC adapter for ACS2311
- » ACC1001KIT - ACC1001, ACS2310, ACS2311, ACS2308, and CAT5e-RA (wall mount kit with power adapter)
- » ACC1001K - ACC1001, ACS2310, ACS2311, and CAT5e-RA (wall mount kit without power adapter)

Applications

- » Mini environment single room FFU control
- » Flow hoods controlling FFU and monitor differential pressure
- » Small cleanroom controlled with one zone
- » Notify BMS/relay trip for alarm condition



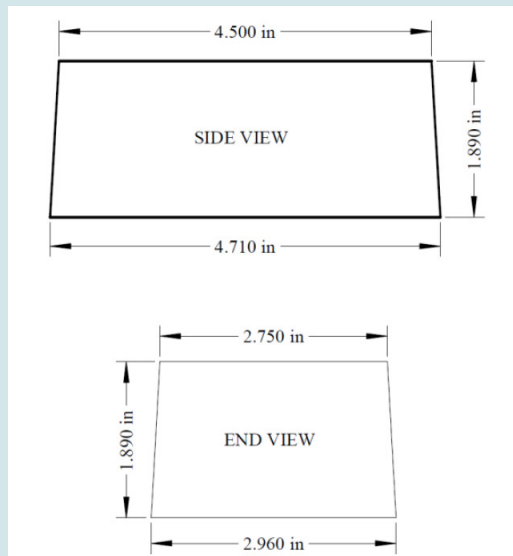
ACS2311 - Power
Communication Adapter

Save Time • Save Money • Improve Performance

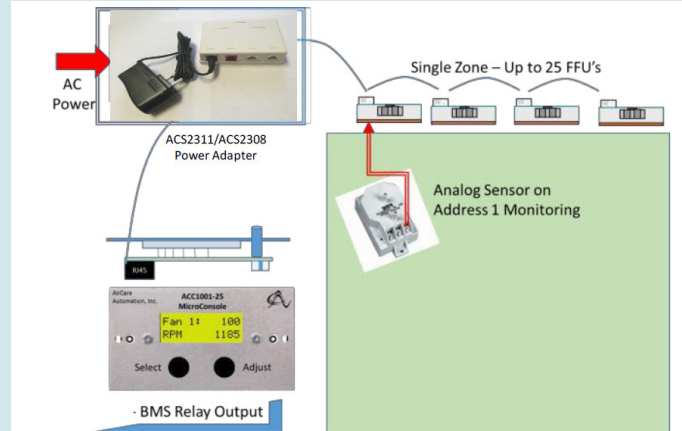
■ Dimensions



Two-line display with 12 characters, two encoders, and 1.5" x 0.2" size Select (menu) and Adjust knobs



■ Communication



■ Display

Screen Sequence, Main Menu

Console Info & Setup>	↓ ● ↑ ●	Push1 → Opens Sub-Menu.
Switch Setup>	↓ ● ↑ ●	Push1 → Opens Sub-Menu.
Sensor Setup>	↓ ● ↑ ●	Push1 → Opens Sub-Menu.
Alarm Setup>	↓ ● ↑ ●	Push1 → Opens Sub-Menu.
Monitor>	↓ ● ↑ ●	Push1 → Opens Sub-Menu.

Monitor Mode (Polls Sensor and FFU Continuously)

Fan 1: 100 RPM 1185	↓ ● ↑ ●	Initial state. Turn1 changes screen. Turn2 opens and changes value. Push1 and Push2 have no effect.
Fan 1> 74 RPM 1185	↓ ● ↑ ●	Turn2 → Opens and changes setpoint value.
Fan 1: 74 RPM 877	↓ ● ↑ ●	Push2 → Saves, closes and applies new value.
Fan 1: 74 RPM 877	↓ ● ↑ ●	Resumption of initial state.