

HOUSING STYLE:

- RSR - FILTER ONLY ROOMSIDE REMOVABLE
- RSRF - FILTER, BAFFLE, AND MOTOR ROOMSIDE REMOVABLE

MOTOR: ECM MOTOR / FORWARD CURVE BLOWER

- 115V, 60 Hz, 1 PHASE, 5.0 FLA
- 208-240V, 50/60 Hz, 1 PHASE, 3.0 FLA
- 277V, 60 Hz, 1 PHASE, 2.5 FLA

FILTER:

- HEPA 99.99% @ 0.3 MICRON UL 900 (STANDARD)
- ULPA 99.9995% @ 0.12 MICRON (U/F5) UL 900
- PTFE
- OTHER _____

CONTROL:

- UNIVERSAL CONTROL CARD - DIP SWITCH SELECTABLE (CON4)
- MANUAL SPEED CONTROL (STD. FACTORY PRESET)
- 0-10VDC INPUT
- MODBUS RTU NETWORK
- ROOM SIDE INFARED SPEED CONTROL (RS)
- REMOTE MOUNTED VISUAL CONTROL UNIT (CSL)

HOUSING FINISH:

- MIL FINISH ALUMINUM (STANDARD)
- POWER COAT PAINT (WHITE)
- 304 STAINLESS STEEL (ADD 3/8" TO OVERALL HEIGHT)

SCREEN FINISH:

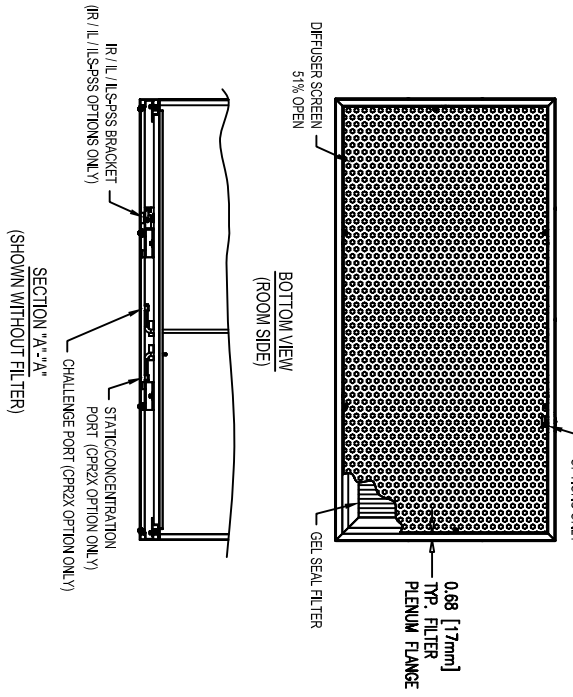
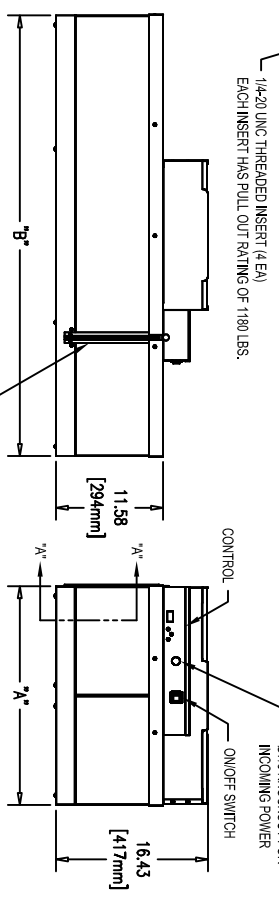
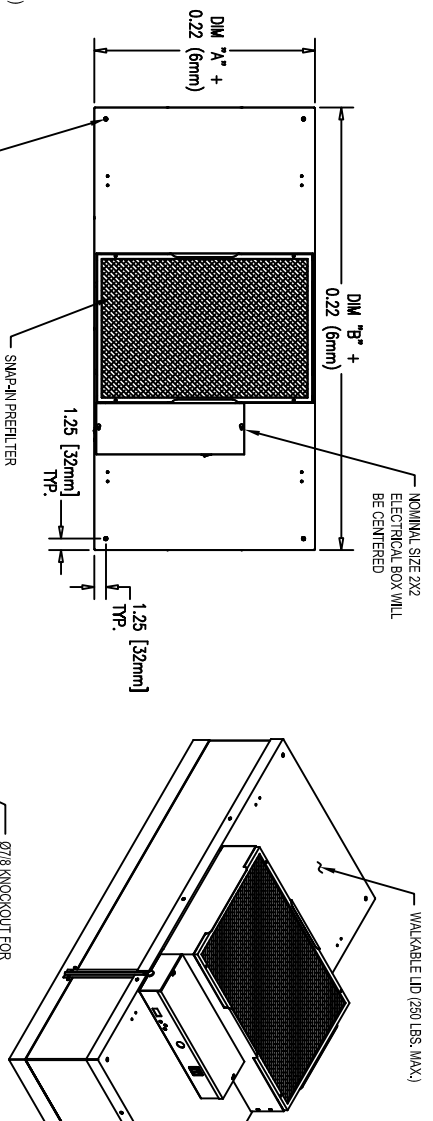
- ANODIZED ALUMINUM (STANDARD)
- POWER COAT PAINT (WHITE)
- 304 STAINLESS STEEL

OPTIONS:

- 10" (254 mm) ALUM. DUCT COLLAR (10691 SHIPPED LOOSE)
- 12" (305 mm) ALUM. DUCT COLLAR (10789 SHIPPED LOOSE)
- POWER CORD - 115V ONLY (SHIPPED LOOSE) (NOT ACCEPTABLE FOR PLENUM APPLICATIONS)
- IL - *GREEN INDICATOR LIGHT (ON = MOTOR RUNNING; OFF = MOTOR FAILURE)
- IL-SPSS - *RED FILTER LOAD INDICATOR LIGHT (ON = TIME TO CHANGE FILTER)
- CPR2X - (1) 1/8" FNPT ROOMSIDE CHALLENGE PORT AND (1) 1/8" FNPT STATICCONCENTRATION PORT
- 0-10V/OUTPUT SIGNAL WITH PRESSURE TRANSMITTER FOR CONTINUOUS FILTER MONITORING.
- 3/4" KNIFE EDGE FOR CEILING GRID WITH GEL SEAL (ADD 3/4" TO OVERALL HEIGHT).

CERTIFICATION:

- UL 507 LISTED (E152895)
- CE CERTIFIED



FILTER SIZE (OD)		NOMINAL FILTER SIZE	APPROX. WEIGHT
DM 'A' In (mm)	DM 'B' In (mm)		
23.63 (600)	47.63 (1210)	2X4	(ALUM.) 71 lbs
23.50 (597)	47.50 (1207)		(SST) 32 Kgs
23.25 (591)	47.25 (1200)		(SST) 81 lbs
23.13 (588)	47.13 (1197)	2X3.5	(SST) 81 lbs
23.00 (584)	47.00 (1194)		(ALUM.) 37 Kgs
23.03 (585)	46.83 (1185)		(ALUM.) 62 lbs
23.63 (600)	41.63 (1057)	2X3	(ALUM.) 28 Kgs
23.50 (597)	41.50 (1054)		(SST) 72 lbs
23.25 (591)	41.25 (1048)		(SST) 33 Kgs
23.13 (588)	41.13 (1045)	2X2	(ALUM.) 54 lbs
23.00 (584)	41.00 (1041)		(SST) 24 Kgs
23.03 (585)	40.75 (1035)		(SST) 64 lbs
23.63 (600)	35.63 (905)	2X2	(ALUM.) 29 Kgs
23.50 (597)	35.50 (902)		(SST) 44 lbs
23.25 (591)	35.25 (895)		(SST) 20 Kgs
23.13 (588)	35.13 (892)	N/A	(SST) 54 lbs
23.00 (584)	35.00 (889)		(SST) 24 Kgs
23.03 (585)	34.84 (885)		(ALUM.) 29 Kgs

** CONTRACT MFG. TO INSURE SIZE AVAILABILITY.

SIGNATURE _____

DATE _____

COMPANY _____

PROJECT _____

P.O. _____

101 Mackail Rd.
Sartford, NC 27330
PHONE: 919-775-2201
PHONE: 1-800-884-0002
FAX: 1-800-456-2379
www.enviroco.com
email: enviroco@enviroco.com

MAC10 IQ
RSR/RSRF

UNLESS SPECIFIED, ALL DIMENSIONS ARE IN INCHES. TOLERANCE: XX.X0 XX.X015 ANGULAR ±"

THIS DRAWING IS THE PROPERTY OF ENVIRCO, AND MAY NOT BE REPRODUCED OR PUBLISHED WITHOUT AUTHORIZATION FROM ENVIRCO.

DRAWING NO: **8000003**
DATE: 7-17-12
DESIGNER: _____
CHECKER: _____
REVISION: _____
DATE: _____

